

# FRONT OPEN SERIES

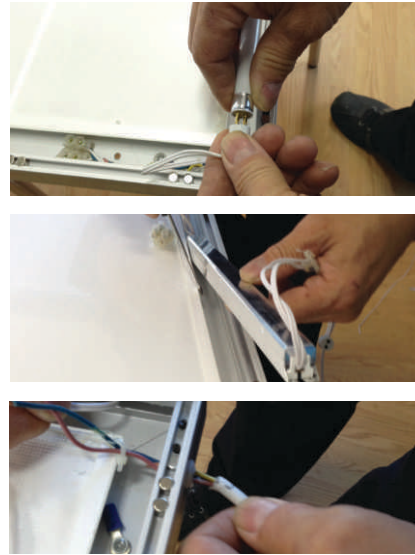
## LED Conversion



**Step 1**  
Turn off and unplug lightbox's power;



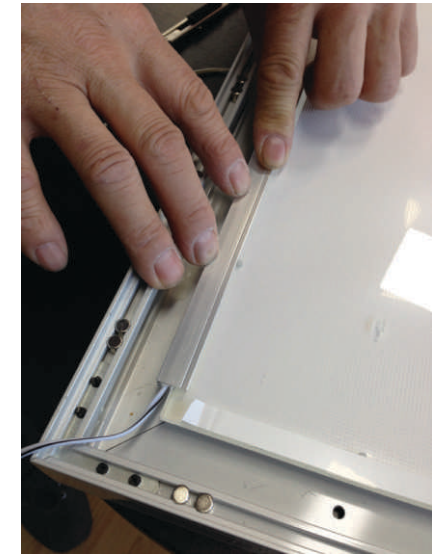
**Step 2**  
Remove all existing cover film;



**Step 3**  
Remove all existing electric components;



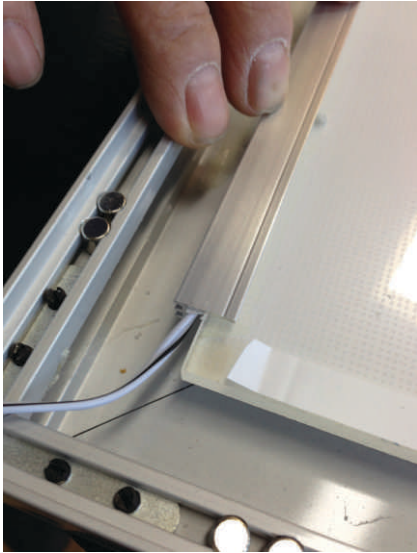
**Step 4**  
Peel off double sided tape on the supplied LED strips;



**Step 5**  
Firmly apply on to the 2 long edges of the lumi panel; Position in the middle.

# FRONT OPEN SERIES

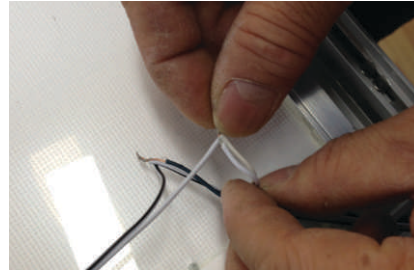
## LED Conversion



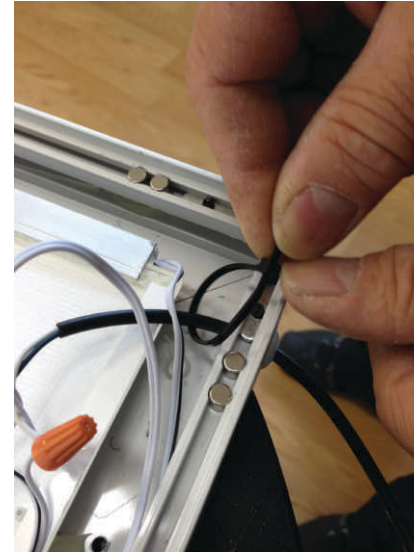
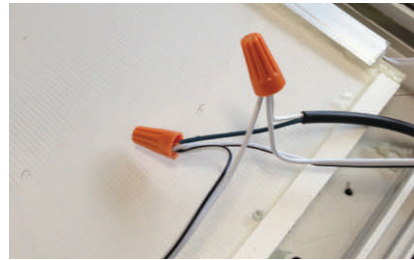
**Step 6**  
Make sure LEDs press against the side of the lumi panel;



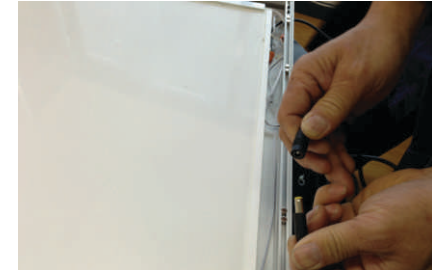
**Step 7**  
Insert supplied dual core cable with a round female plug into the lightbox;



**Step 8**  
Connect all 3 cables using supplied wire nuts, twist to secure. Make sure colour match. Warm coloured cable or white cable with black strip means +, cool coloured or white means -;



**Step 9**  
Secure input cable with a cable tie;



**Step 10**  
Test lightbox by plug in supplied LED adaptor.

